



Module 2 - Sheet Organization

2.4 MOCK-UP SHEETS

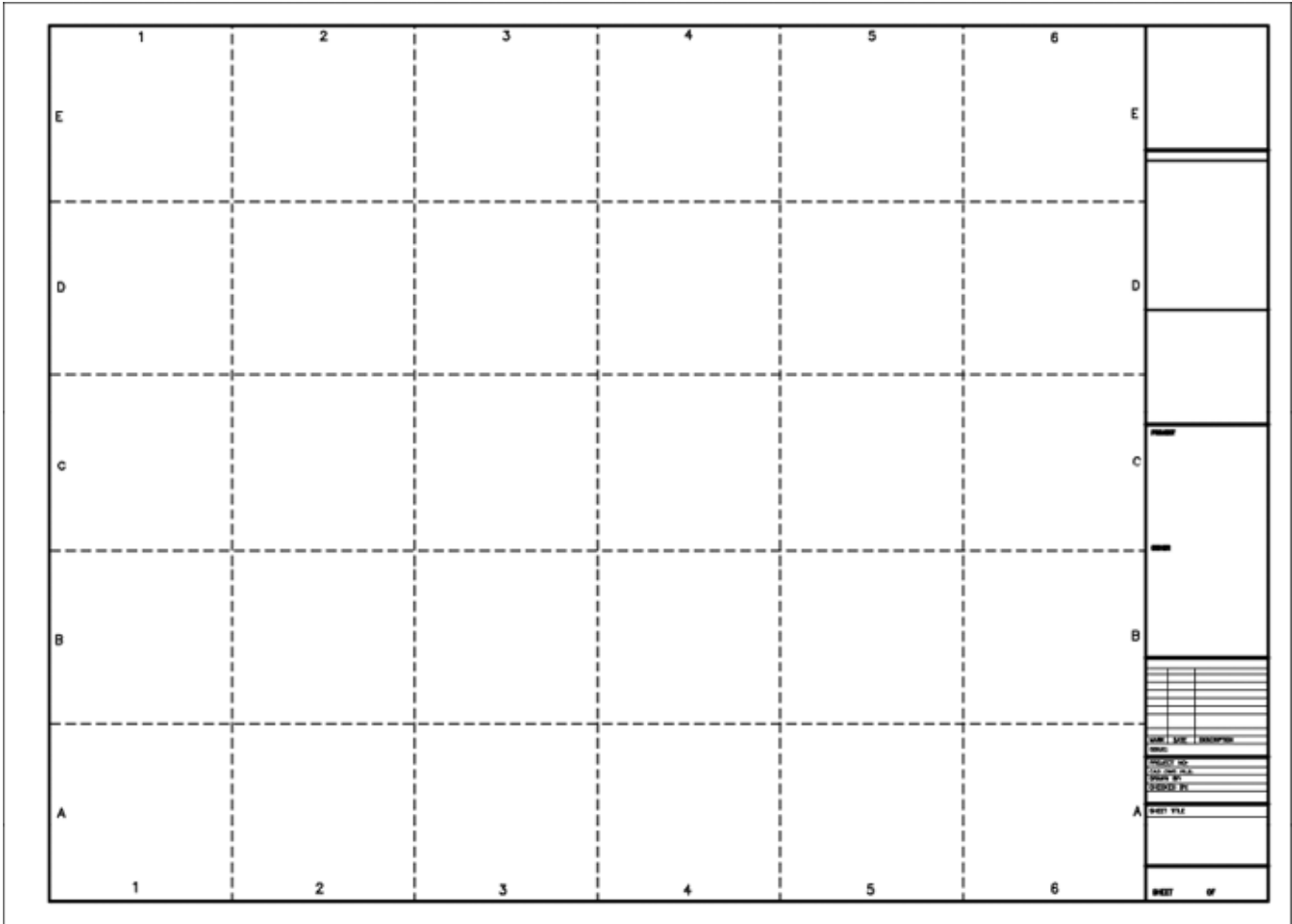
Mock-up sheets are often developed to assist in the layout and production of the drawing set. Individual mock-up sheets are developed as a miniature of each proposed sheet, prior to production. Drawings, schedules, notes, and other data are located on the mock-up sheets within the drawing area modules. Planning with mock-up sheets enables one or more persons to work on a drawing set at the same time, while maintaining a coordinated effort.

Mock-up sheets are normally 216 mm x 279 mm (8-1/2 inches x 11 inches) or 279 mm x 432 mm (11 inches x 17 inches). A scaling factor is used to determine the size of the drawing or drawings to be located on the completed sheet. The drawing area module grid also assists in placing drawings on the mock-up sheet and determining the number of drawings that will fit on the sheet.

Scale factors for mock-up sheets are:

• Full size scale:	3" = 1'-0"
• 3" scale:	3/4" = 1'-0"
• 1-1/2" scale:	3/8" = 1'-0"
• 1" scale:	1/4" = 1'-0"
• 3/4" scale:	3/16" = 1'-0"
• 1/2" scale:	1/8" = 1'-0"
• 1/4" scale:	1/16" = 1'-0"
• 1/8" scale:	1/32" = 1'-0"
• 1/16" scale:	1/64" = 1'-0"

The **UDS Figure 2.4-1** is included below for use as a template for preparing scaled mock-up sheets.



UDS Figure 2.4-1 11" x 17" Mock-up sheet of a full size ANSI D 34" x 44" sheet.